

D.R. Distribution

The Heating Specialists

RADIANT INDOOR HEATING

EFFECTIVE, EFFICIENT HEATING SOLUTIONS

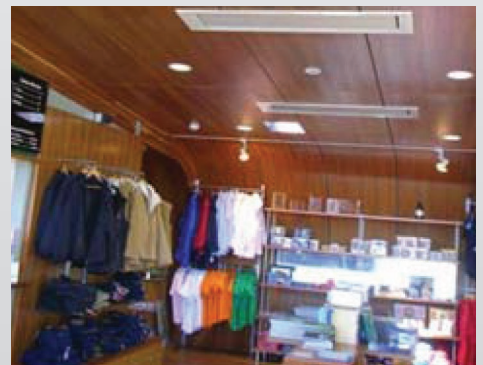
- The THS-HEATSTRIP Radiant Heaters use the radiant heat principal to provide a gentle, effective and efficient solution for tough indoor heating applications

HEATSTRIP Performance

- The THS-HEATSTRIP design incorporates an exclusive, extruded aluminium alloy profile with a high surface area to radiate the heat efficiently and effectively.
- The special design of the radiation surface ensures rapid, even heat dispersion to provide an ideal indoor comfort heat environment. In fact, the high performance of the THS-HEATSTRIP means that they can be mounted from 2.1 metres to over 5 metres from the floor.
- These medium intensity radiant heaters have a water protection rating of IPX-3 and are specifically designed for indoor use.
- The THS-HEATSTRIP is perfect for large open indoor spaces such as classrooms, lecture halls, and dance studios. They may also be suitable for outdoor areas that are completely undercover and enclosed.

HEATSTRIP Design Flexibility

- The THS-HEATSTRIP can be designed to provide comfort heating for a single room or a huge stadium.
- Alternatively, the THS-HEATSTRIP can be located above a workplace in a large factory to provide spot heating for just one person.
- Standard ceiling mounting brackets are supplied, plus optional brackets are available for suspension mounting, angle mounting, T-Bar ceiling mounting or flush recess mounting. Model selection and installation is quick and simple, and detailed instructions are provided.
- Standard casing colour for the THS-HEATSTRIP is white with anodised aluminium radiation panels.
- The THS-HEATSTRIP may be controlled with a variety of timers, thermostats and heat regulators, making it possible to custom design a cost effective heating solution to suit your exact requirements.



D.R. Distribution

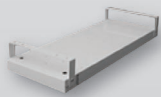
The Heating Specialists

MODEL

MODEL WATTS	DIMENSIONS	RUNNING COST	VOLTAGE OPTIONS
THS800	695 X 270 X 50	10.8 ¢ hr	FOR ALL MODELS
THS1200	955 X 270 X 50	16.8 ¢ hr	240 V (Australia)
THS1800	1405 X 270 X 50	25.2 ¢ hr	
THS2400	1820 X 270 X 50	33.6 ¢ hr	Approx running cost based on 14 ¢ tariff

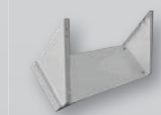
MOUNTING OPTIONS

MODEL	STANDARD	ANGLE	SUSPENSION	T-BAR	FLUSH
THS800	C/W	THS-AMB-02	THS-SMB-800	THS-TMK-800	THS-FMK-800
THS1200	C/W	THS-AMB-02	THS-SMB-1200	THS-TMK-1200	THS-FMK-1200
THS1800	C/W	THS-AMB-02	THS-SMB-1800	N/A	THS-FMK-1800
THS2400	C/W	THS-AMB-02	THS-SMB-2400	N/A	THS-FMK-2400



Standard Surface Mounting Brackets

- All heaters come complete with surface mounting brackets. Measure out the centres between fixing brackets using the adjacent chart. Using the mounting brackets as a template, mark fixing holes on the ceiling. Fix mounting brackets to the ceiling ensuring the fixing method can safely support the weight of the heater and mount assembly. Hold heater in vertical position with connection end facing down and thread fixing screws through the bracket into the clinch nuts at the end of the heater. Swing the heater into the horizontal position and thread fixing screws through the bracket into the clinch nuts at the connection end of the heater.



Rear view with Angle Mounting Bracket Set installed

- Heatstrip heaters can be wall or ceiling mounted with an optional 45° angle bracket set.

Rear view with Suspension Mounting Bracket Set installed.

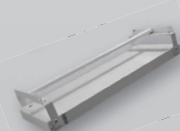
Suspension Mounting: (Rigid Fixing)

Heaters can be suspended from high ceilings using rigid rods or frame attached to the standard brackets.
Note: Rigid fixing is definitely required to prevent the heater from twisting in operation.

Suspension Mounting: (Chain)- Available for ALL models.

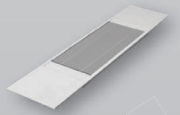
If heaters are to be suspended with chain or other non-rigid method, the optional suspension mounting kit must be used. The suspension mounting kit screws to the standard brackets and chains can then be attached to each corner of the bracket.

Note: Chain of adequate strength must be used and the tension in each length of chain should be equal.



Front view with T-Bar Mounting Kit installed.

- The T-Bar Mounting kit is designed to fit as a half tile into a standard 1200mm x 600mm T-Bar Ceiling Grid. Fix the heater into the T-Bar bracket by threading 4 screws through the holes at each corner of the bracket into the clinch nuts. Fit the whole assembly into the T-Bar ceiling grid.



Front view with Flush Mounting Kit installed.

- The flush mounting kit allows the heater to be surface mounted flush into plaster or other types of ceilings. A hole is first cut into the ceiling (refer to hole size chart) and battens fitted to support the bracket parallel to both long sides. Fix the bracket to the battens. Insert the 4 screws provided into the 4 clinch nuts on the heater leaving the heads about 5mm away from the heater casing. Lift the heater into the bracket and allow the screws to locate into the 4 recessed slots at each corner of the brackets.



D.R. Distribution Pty. Ltd.

A.B.N. 42 055 448 952 A.C.N. 055 448 952

Phone (02) 9618 3842 Fax (02) 9829 2603

Unit 9 No 3 Lancaster St Ingleburn NSW 2565 P.O.Box 568 Ingleburn NSW 1890

www.drdistribution.com.au